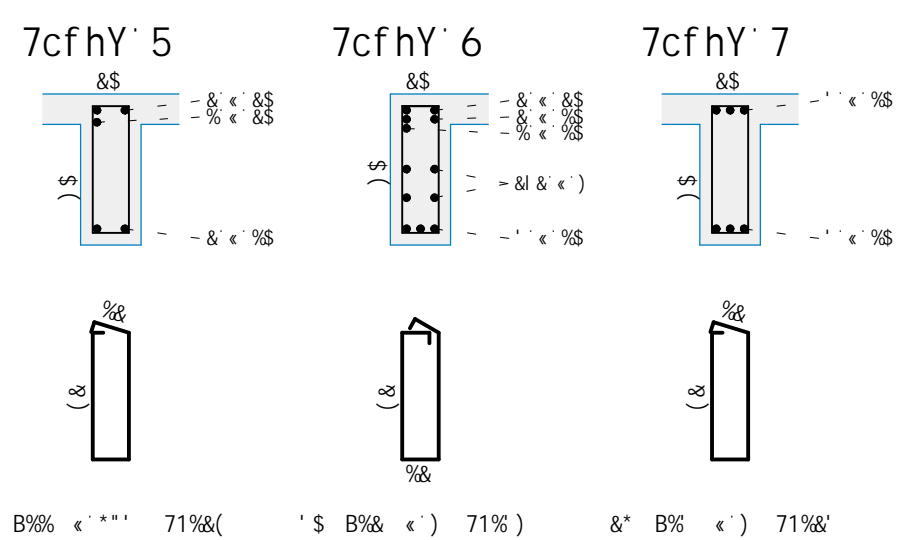


Technical drawing of a bridge structure, showing various dimensions and annotations. The drawing includes a plan view of the bridge deck and a cross-section view. Key annotations include:

- Dimensions:**
 - Top left: 1710 , $8 \text{ B} \epsilon \text{ } 85$, $71(1)$, 98 , $118 \epsilon \text{ } 80754t$.
 - Top right: 655 , $8 \text{ B} \epsilon \text{ } 968^*$, $71(1) \text{ } S$, $8 \text{ B} \epsilon \text{ } 96$, 718^* .
 - Center: 985 , $8 \text{ B} \epsilon \text{ } 95$, 718^* , $118 \epsilon \text{ } 80754t$, $118 \epsilon \text{ } 80754t$.
 - Bottom left: $8 \text{ B} \epsilon \text{ } 719$, $8 \text{ B} \epsilon \text{ } 718$, $8 \text{ B} \epsilon \text{ } 719$, $8 \text{ B} \epsilon \text{ } 719$, $8 \text{ B} \epsilon \text{ } 719$.
 - Bottom right: $8 \text{ B} \epsilon \text{ } 718$, $8 \text{ B} \epsilon \text{ } 718$, $8 \text{ B} \epsilon \text{ } 718$, $8 \text{ B} \epsilon \text{ } 718$.
- Annotations:**
 - Top left: (S^*) , $8 \text{ B} \epsilon \text{ } 85$, $71(1)$.
 - Top right: $8 \text{ B} \epsilon \text{ } 968^*$, $71(1) \text{ } S$.
 - Center: $8 \text{ B} \epsilon \text{ } 95$, 718^* , $118 \epsilon \text{ } 80754t$.
 - Bottom left: $8 \text{ B} \epsilon \text{ } 719$, $8 \text{ B} \epsilon \text{ } 718$, $8 \text{ B} \epsilon \text{ } 719$, $8 \text{ B} \epsilon \text{ } 719$.
 - Bottom right: $8 \text{ B} \epsilon \text{ } 718$, $8 \text{ B} \epsilon \text{ } 718$, $8 \text{ B} \epsilon \text{ } 718$, $8 \text{ B} \epsilon \text{ } 718$.
- Structural Elements:**
 - Bridge deck with multiple lanes.
 - Bridge piers and abutments.
 - Bridge railing.



	F9GI	AC	89	5uC	
5uC	6=H	7CAdF		D9GC	
*\$5	a a	a		[Z	
*\$5	*	(S&	-	-	+
*\$5	%&	&	00	(
*\$5	%&	((%)	
\$5	%&	S	(%)	
*\$5	8.5	+ +	8'		
*\$5	8.5	%&&	(%)	
DYgc HcHu	\$5 1		- +	[Z	
DYgc HcHu	\$5 1) =	[Z	

```

Jc | aY XY WbWYhc XY J= 5G          98%          94% (% a)
HUI U XY YfaXI fU          98S          98G = _IZ#a)

=====
9a9A          FYgi ac XY U, c dcf Y YaYbhc          D9GC          D9GC
          _IZ_ [Z7Z%Si)

=====
J (S)          98%98          9886
J (S+)          &          *
J (S)          (S)          () S

```

[illegible][illegible]

FS(
FS'		
FS&		
FS%		
FS\$	01/09/2025	PROJETO EXECUTIVO - LICITAÇÃO DA OBRA
bs rY]g-c	XUuU	XYgW], -c


Ministério Público do Estado de Minas Gerais


fábrica civil
 engenharia de projetos
www.fabricacivil.com.br

SEDE DAS PROMOTORIAS DE JUSTIÇA DE IPATINGA-MG

AV. DESPACHANTE RUI DJALMA BARBOSA, Nº31 - CENTRO - IPATINGA/MG

A=B=GHvF=C` Di 6@=7C` A=B5G` ; 9F5=G

7C8F88 8C 5FA5uÈC 89 J=; 5G ! H=DC	J(\$)' #' J(\$+' #' J(\$,
---------------------------------------	---------------------------

5H HCF 8C DFC>9HC.	5GG-B5HI F5.	8=G7-D8=B5.
E<5E8: 89: 5@A9-85: 75F8CGC		9CH

9B: 9B<9=C 7=J=0	7F95 A: %')&+5#8	5G<B5H F5.	9H1
F960CBGJ198 H7B=7C			9H5D5 8C DFC:9HC

F<5F E 89 5@A9=85 75F8CGC		9L97H H=JC
9B 9B<9F C 7J J=@ 7CFBQRSAFC 8C DFC<OHF	7F95 A< %>)&#B	5G<B5HF5
		C=5

5B8F9' J" '@5DF9; 5		
5FEI=H9HC 9' IF65B=GH5	CAU = A83754-7	

9G75e5. %) \$	89G9B<C F<5FÈ` 75F8CGC	7eB< C` 8C` DF C>9HC. %\$) * #&\$&'	064/108
-------------------	---------------------------	--	---------

064/108